

TYPES OF ANIMALS

Can you decide which animals belong in which group?

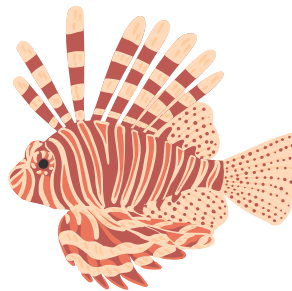
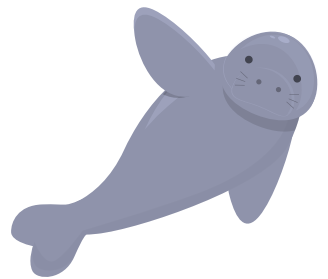
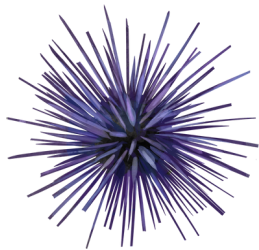
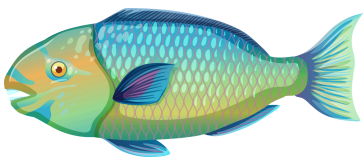
Mammals

Reptiles

Invertebrates

Fish

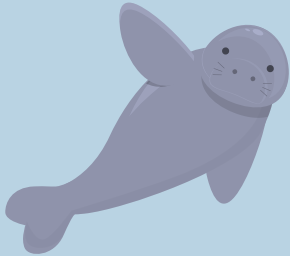
--	--	--	--



ANSWERS

Can you decide which animals belong in which group?

Mammals



Dugong



Narwhal

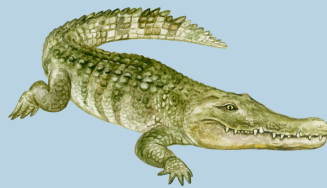


Sealion

Reptiles

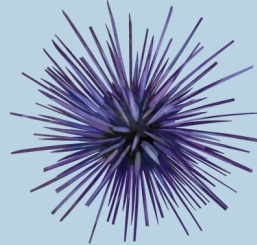


Turtle



Saltwater
crocodile

Invertebrates



Sea
urchin



Hermit
crab



Seastar

Fish



Parrotfish



Anglerfish



Eel



Lionfish